



BUILT FOR SAILORS

2022

solaris

SOLARIS YACHTS
BUILT FOR SAILORS

2022

solaris

An aerial photograph of a sailboat with a large red sail, sailing on a blue ocean. The boat's deck is made of light-colored wood, and several crew members are visible on board. The text 'Excellence at sea' is overlaid on the image in a white, sans-serif font.

Excellence
at sea



“Every great design begins with an even better story.”

On the shores of the Venetian lagoon where first the Romans and later the Serenissima Republic left signs of their important seafaring heritage, Solaris Yachts started building sailing vessels in 1974.

Almost fifty years of construction experience have honed the skills of the craftsmen that shape today's

performance yachts, many of them belonging to the 3rd generation of Solaris craftsmen. With the recent extension, Solaris Yachts today operates on a total yard area of 26.000 square meters, 10.200 of those under cover. All yachts are produced 100% in-house for the highest level of quality control.

The strong on-site design and engineering teams are never detached from the craftsmen who shape each of our famous high-performance cruising yachts with incomparably solid and beautiful interiors.

Every Solaris owner knows that our yachts are truly “BUILT FOR SAILORS”.

We have grown through the years but our values are the same. That's what set us apart

QUALITY AND EXCELLENCE

From the very first 18-foot yacht built in 1974, to the Solaris 111 flagship launched in 2020, every single Solaris yacht possesses the same sea-going characteristics and construction excellence.

Solaris is known for using the latest and most advanced construction techniques and materials while never losing sight of safety, stability and comfort.

Long standing collaborations with the best naval architects and designers allow us to produce fast, stable and truly sea worthy yachts of outstanding

quality – proudly made in Italy. The quality and the finish of the interior joinery are distinctive features of Solaris, renowned and appreciated all over the world. The finest woods are elaborated by the highest skills into refined details throughout every Solaris interiors.

almost
50

Years of
experience

400

Pairs of hands
working to deliver
only the best

700

N. of yachts
sold

8500

Meters of solaris
yachts in water



Craftmanship

More than 700 yachtmen have trusted Solaris to realize their cruising dreams



Aquileia

Forli

Nearly 50 years of experience in building the highest quality performance cruisers on the market are flowing into every single unit that leaves our sheds

30

Dealers around
the world

11

Models in
production



Elegance is when
the inside is as
beautiful as the
outside

COCO CHANEL

Every model in the Solaris range is built in accordance with the strict standard rules of the Maxi Ocean Yachts. Solaris is known to build stiff, solid and stress-resistant yachts: in every solaris yacht, each structural bulkhead is built in composite, with a minimum of 40mm thickness and are fully laminated to both the hull and the deck making the boat very stiff and solid.



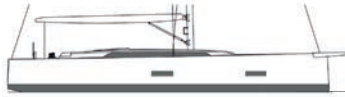
The main bulkhead and the reinforcing structures behave and work together as a solid “structural cage” that bears the local loads and make the yacht resistant to any deformation or torsion in every weather and sea conditions





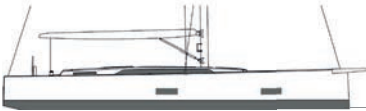
40

Pag 11



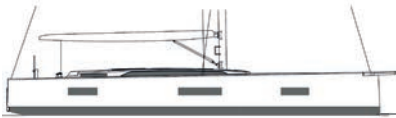
44

Pag 15



47

Pag 19



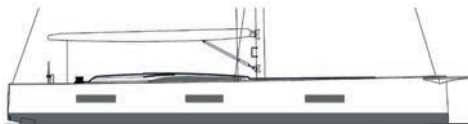
50

Pag 23



55

Pag 27



60

Pag 31



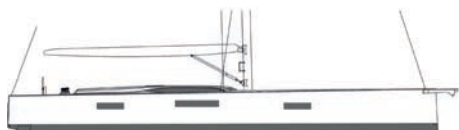
64^{RS}

Pag 35



68^{RS}

Pag 39



74^{FD}

Pag 43



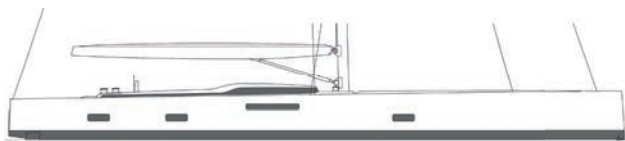
74^{RS}

Pag 43



80^{RS}

Pag 47



III

Pag 51



CHEETAH

The entry to the Solaris world of high-end performance cruisers

40

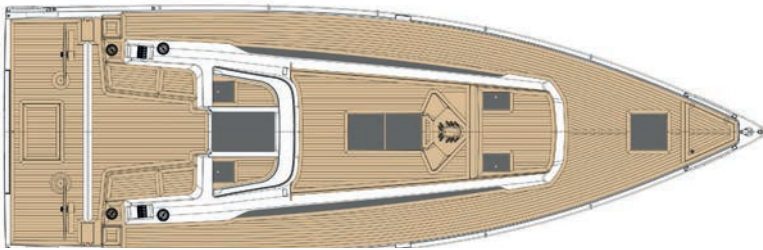


SOLARIS 40

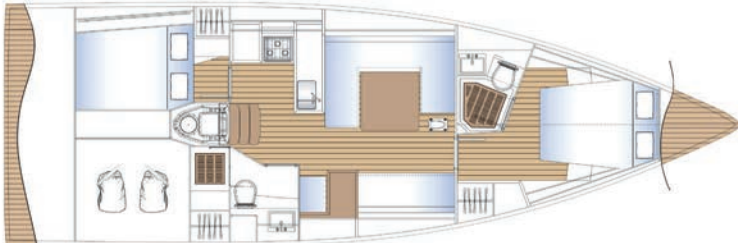
LOA	12.36	M
LWL	11.70	M
BEAM	4.10	M
DRAFT	2.40 (2.00 OPTIONAL)	M
DISPLACEMENT	9,400	KG
BALLAST	3,050	KG
SAIL AREA	100	M ²
MAINSAIL	57	M ²
JIB	43	M ²
P	16.40	M
E	5.75	M
I	16.80	M
J	4.70	M
ENGINE	30-50-60	HP
WATER TANK	350	L
FUEL TANK	200	L
CE CERTIFICATION		RINA
DESIGNER	JAVIER SOTO ACEBAL	
INTERIOR DESIGNER	STUDIO ROSEO	
STRUCTURAL	SOLARIS DESIGN TEAM	



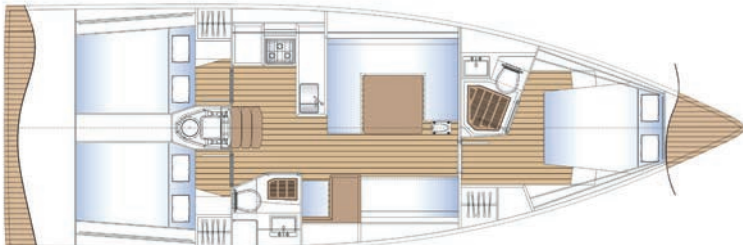
DECK PLAN



INTERIOR PLAN



ALTERNATIVE INTERIOR PLAN



13

A revolutionary design that offers an incomparable level of comfort and performance

- Good internal spaces
- Large full beam cockpit
- Low profile



BALTAZ
VALPARAISE



Solaris **44**

Famous Solaris performance
in an easy to handle and
family friendly format

15

44

SOLARIS 44

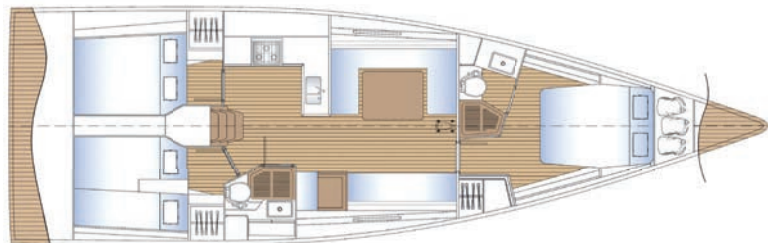
LOA	13.35	M
LWL	12.71	M
BEAM	4.18	M
DRAFT	2.60 (2.40 OPTIONAL)	M
DISPLACEMENT	LIGHT - 9,900	KG
BALLAST	3,600	KG
SAIL AREA	118	M ²
MAINSAIL	66	M ²
JIB	53	M ²
P	18.00	M
E	6.10	M
I	18.40	M
J	5.25	M
ENGINE	VOLVO D2 50 (D2-60 D2-75 OPTIONAL)	HP
WATER TANK	380	L
FUEL TANK	220	L
CE CERTIFICATION	RINA OCEAN CATEGORY A	
DESIGNER	JAVIER SOTO ACEBAL	
INTERIOR DESIGNER	SOLARIS DESIGN TEAM	
STRUCTURAL	SOLARIS DESIGN TEAM	



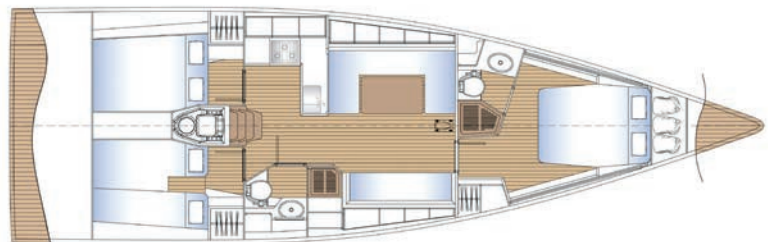
DECK PLAN



INTERIOR PLAN



ALTERNATIVE INTERIOR PLAN



- Sail locker
- large cockpit
- Elgant interiors





very successful model
with a unique balance
between performance
and comfort



SOLARIS 47

LOA	14,35	M
LWL	13,40	M
BEAM	4,36	M
DRAFT	2,80 (2,50 OPTIONAL)	M
DISPLACEMENT	LIGHT - 12,600	KG
BALLAST	4,320	KG
SAIL AREA	129	M ²
MAINSAIL	70	M ²
JIB	59	M ²
P	19,05	M
E	6,50	M
I	19,60	M
J	5,475	M
ENGINE	VOLVO PENTA D2 50 S/ SR (75 OPTIONAL)	HP
WATER TANK	420	L
FUEL TANK	370	L
CE CERTIFICATION	RINA OCEAN CATEGORY A	
DESIGNER	JAVIER SOTO ACEBAL	
INTERIOR DESIGNER	SOLARIS DESIGN TEAM	
STRUCTURAL	SOLARIS DESIGN TEAM	

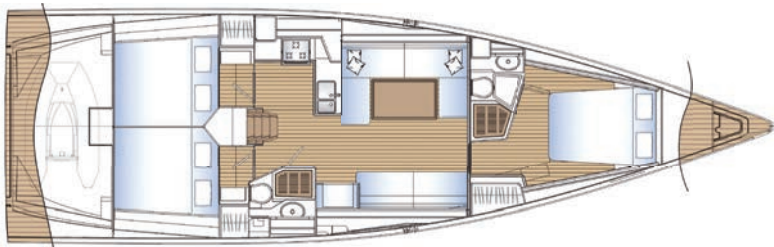




DECK PLAN



INTERIOR PLAN



- Italian design and craftsmanship at its best
- Transversal tender garage
- 1 master suite with its own bathroom, 2 very large aft cabins with an additional bathroom





All the features of a true
blue water cruiser

50
new

SOLARIS 50

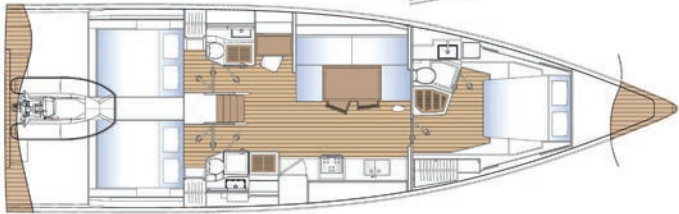
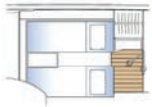
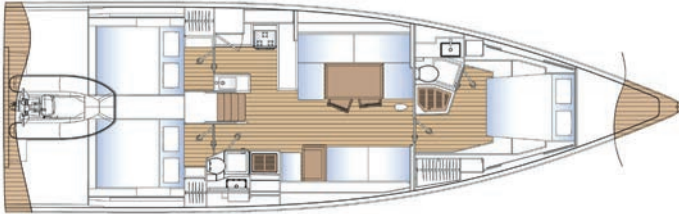
LOA	15.50	M
LWL	14.68	M
BEAM	4.78	M
DRAFT	2.80 (2.60 -2.35 OPTIONAL)	M
DISPLACEMENT	15,900	Kg
BALLAST	4,850	Kg
SAIL AREA	155	M ²
MAINSAIL	84.70	M ²
JIB 106%	70.30	M ²
P	20.48	M
E	7.10	M
I	21.45	M
J	6.00	M
ENGINE	VOLVO PENTA D2 50 S/SR (75 OPTIONAL)	HP
WATER TANK	510	L
FUEL TANK	370	L
CE CERTIFICATION	RINA OCEAN CATEGORY A	
DESIGNER	JAVIER SOTO ACEBAL	
INTERIOR DESIGNER	SOLARIS DESIGN TEAM	
STRUCTURAL	SOLARIS DESIGN TEAM	



DECK PLAN



STANDARD AND ALTERNATIVE INTERIOR PLAN



- Newest model of the range
- The first yacht of this size that can accommodate a tender with a longitudinal access
- Wide cockpit for one or two tables



DOUBLE MOON
SCHAFFHAUSEN



Solaris **55**

Classic elegant lines with a modern hull design and sail plan. A mid-size yacht with the features of much larger models

27

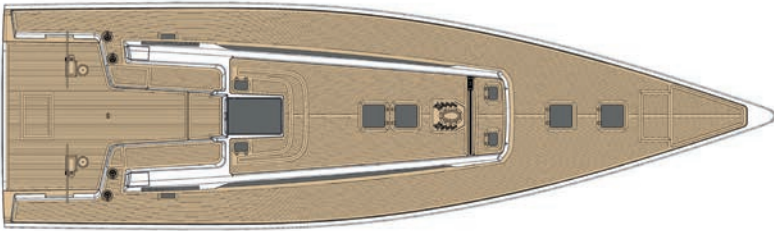
55

SOLARIS 55

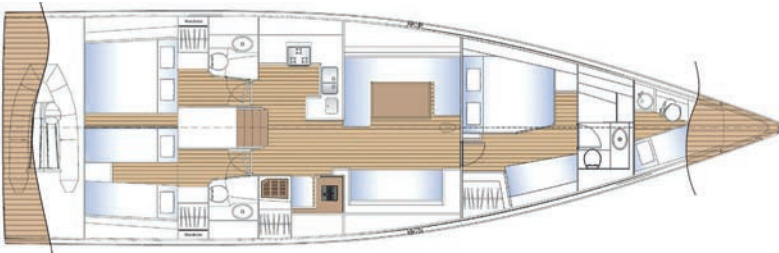
LOA	16.70	M
LWL	15.78	M
BEAM	4.85	M
DRAFT	3.00 (2.70 OPTIONAL)	M
DISPLACEMENT	LIGHT - 17,600	Kg
BALLAST	6,500	Kg
SAIL AREA	176	M ²
MAINSAIL	98	M ²
JIB	78	M ²
P	22.20	M
E	7.60	M
I	23.20	M
J	6.55	M
ENGINE	VOLVO PENTA 75 (110 OPTIONAL)	HP
WATER TANK	475	L
FUEL TANK	385	L
CE CERTIFICATION	RINA OCEAN CATEGORY A	
DESIGNER	JAVIER SOTO ACEBAL	
INTERIOR DESIGNER	STUDIO ROSEO	
STRUCTURAL	SOLARIS DESIGN TEAM	



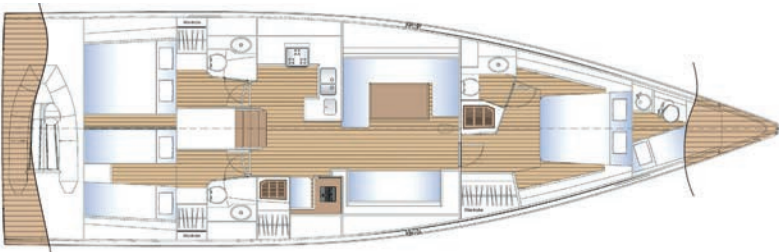
DECK PLAN



INTERIOR PLAN



ALTERNATIVE INTERIOR PLAN



- Two layouts possible
- Crew cabin in bow layouts
- Transversal tender
- Very comfortable design
- Elegant classic lines



JOKALE
SIBENIK



Solaris **60**

An outstanding flush deck cruiser with a vast cockpit and comfortable access to the water

60

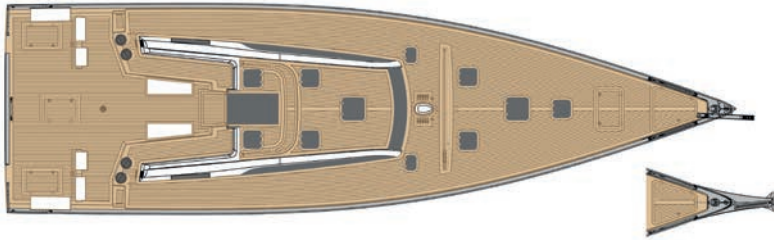
SOLARIS 60

LOA	18.31	M
LWL	17.40	M
BEAM	5.28	M
DRAFT	3.20 (2.80 OPTIONAL)	M
DISPLACEMENT	LIGHT - 25,800	Kg
BALLAST	7,900	Kg
SAIL AREA	201	M ²
MAINSAIL	100	M ²
JIB	101	M ²
P	24.00	M
E	8.20	M
I	25.00	M
J	7.10	M
ENGINE	75 (110 - 150 OPTIONAL)	HP
WATER TANK	450	L
FUEL TANK	650	L
CE CERTIFICATION	CATEGORY A	
DESIGNER	JAVIER SOTO ACEBAL	
INTERIOR DESIGNER	STUDIO ROSEO	
STRUCTURAL	SOLARIS DESIGN TEAM	

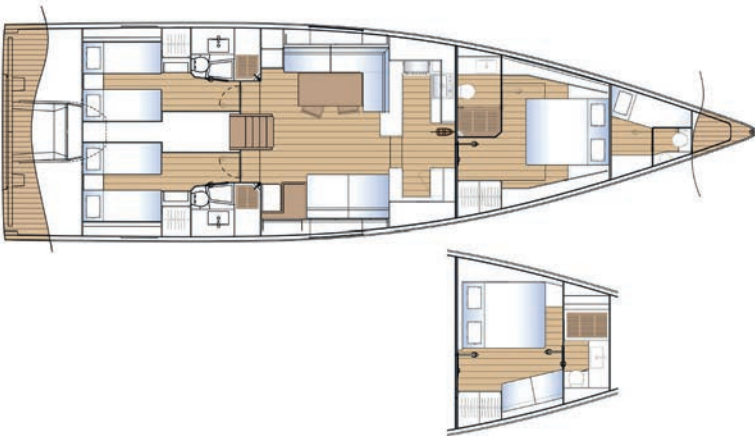


60

DECK PLAN



INTERIOR PLAN

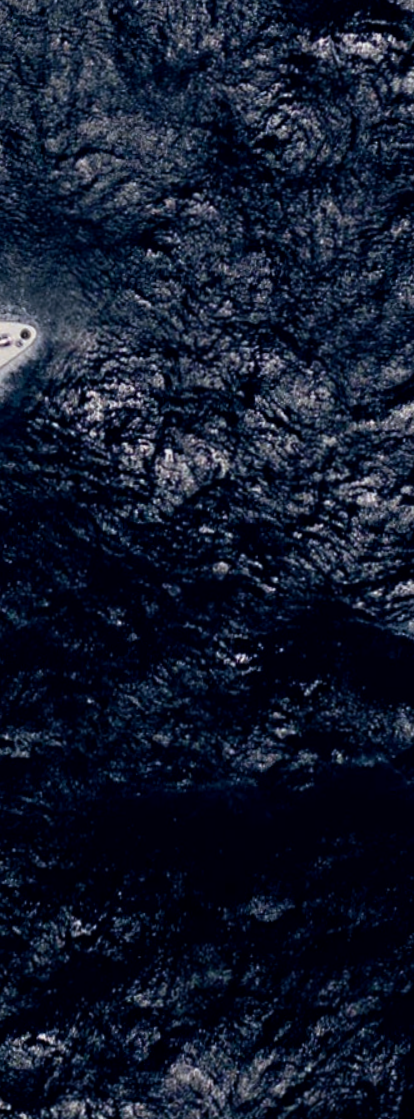


- Crew cabin with separate bath and shower
- Very modern sleek lines
- High performance rigging option
- Unobstructed access to the water – beach platform
- Longitudinal tender storage



The first raised-salon model, with incredibly light and voluminous interiors

64 RS

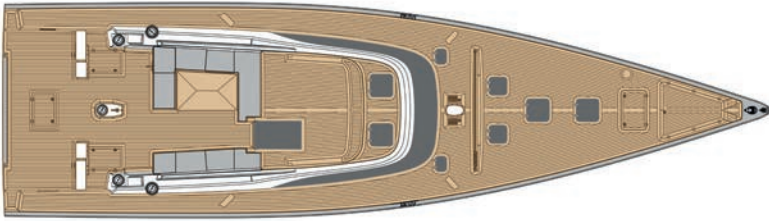


SOLARIS 64 RS

LOA	19.40	M
LWL	18.20	M
BEAM	5.40	M
DRAFT	3.30 - (2.90 OPTIONAL)	M
DISPLACEMENT	LIGHT - 27,600	Kg
BALLAST	8,550	Kg
SAIL AREA	222	M ²
MAINSAIL	120	M ²
JIB 106%	102	M ²
P	24.10	M
E	8.40	M
I	25.30	M
J	7.27	M
ENGINE	VOLVO PENTA 110 (150 OR 180 OPTIONAL)	HP
WATER TANK	900	L
FUEL TANK	800	L
CE CERTIFICATION	RINA OCEAN CATEGORY A	
DESIGNER	JAVIER SOTO ACEBAL	
INTERIOR DESIGNER	STUDIO ROSEO	
STRUCTURAL	SOLARIS DESIGN TEAM	



DECK PLAN



INTERIOR PLAN



64RS

- Raised salon layout
- Very luminous interiors
- 3 owner's suites
- Very spacious cockpit



Thrilling large yacht performance at your fingertips. Beautiful balanced lines

39

68 **RS**



SOLARIS 68 RS

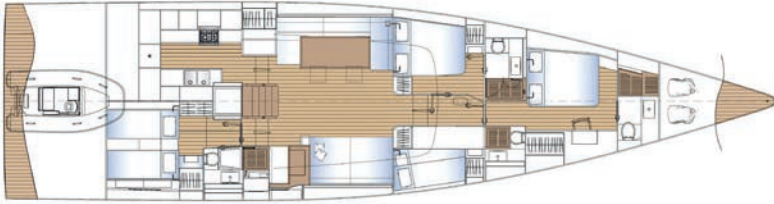
LOA	20.80	M
LWL	19.50	M
BEAM	5.50	M
DRAFT	3.40 - (3.00 OPTIONAL)	M
DISPLACEMENT	28,800	Kg
BALLAST	10,400	Kg
SAIL AREA	264	M ²
MAINSAIL	116	M ²
JIB 106%	148	M ²
P	26.60	M
E	9.16	M
I	27.80	M
J	7.98	M
ENGINE	VOLVO PENTA 150 (190 OPTIONAL)	HP
WATER TANK	1,000	L
FUEL TANK	900	L
CE CERTIFICATION	RINA OCEAN CATEGORY A	
DESIGNER	JAVIER SOTO ACEBAL	
INTERIOR DESIGNER	SOLARIS DESIGN TEAM V. LALOSEVIC / L. MICHELETTI	
STRUCTURAL	SOLARIS DESIGN TEAM	



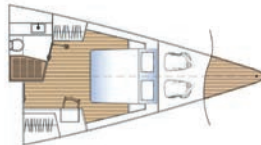
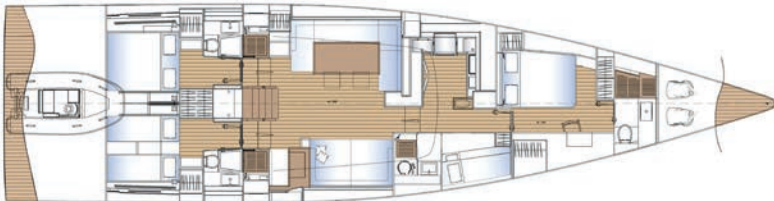
DECK PLAN



INTERIOR PLAN



ALTERNATIVE INTERIOR PLAN



68 RS

- 4 cabins, 4 bathrooms + crew
- Galley aft or forward
- Very comfortable full-beam lounge
- Various layout options

Two designs for different lifestyles: A sporty flush-deck layout for safety, freedom of movement and comfort in regatta, and a raised saloon one with large panoramic and luminous windows, for a better living interior space



B

lue water sailing at its best. A new entry, closing the gap between the 68RS and the 80RS

FD/RS

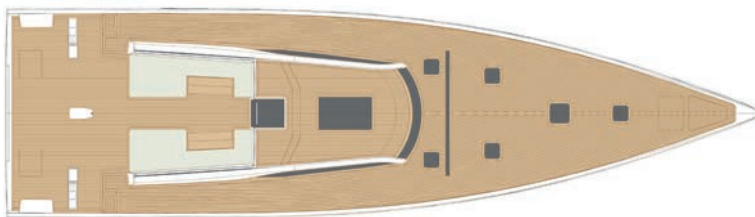
43



SOLARIS 74 FD/RS

LOA	22.00	M
LWL	20.68	M
BEAM	6.10	M
DRAFT	3.50 - (2.90 OPTIONAL)	M
DISPLACEMENT	LIGHT - 38,500	Kg
BALLAST	10,500	Kg
SAIL AREA	290	M ²
MAINSAIL	148	M ²
JIB 106%	142	M ²
ENGINE	150 (175 OR 180 OPTIONAL)	HP
WATER TANK	1,200	L
FUEL TANK	1,000	L
CE CERTIFICATION	OPEN SEA CATEGORY A	
DESIGNER	JAVIER SOTO ACEBAL	
INTERIOR DESIGNER	SOLARIS DESIGN TEAM	
STRUCTURAL	SOLARIS DESIGN TEAM	

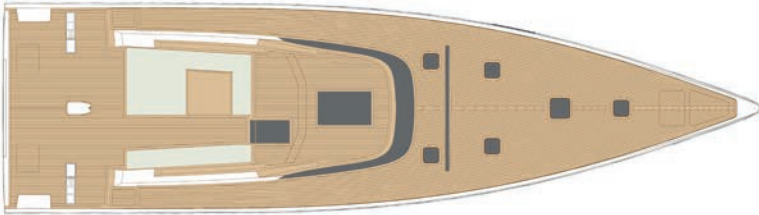
FD DECK PLAN



FD INTERIOR PLAN RS



RS DECK PLAN



RS INTERIOR PLAN RS



- More layouts possible
- Steering with very good visibility
- Perfect access to water



The first Solaris superyacht with highly customizable interiors, built into a proven world cruising platform

47

80 RS

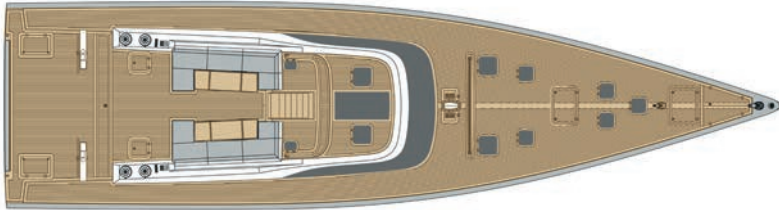


SOLARIS 80 RS

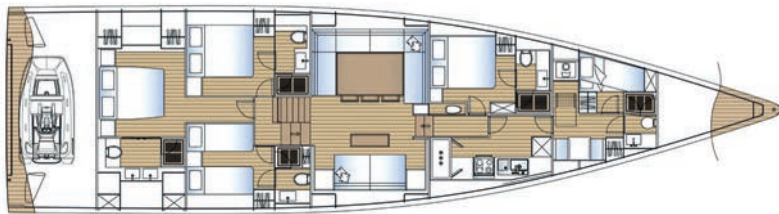
LOA	23.98	M
LWL	22.48	M
BEAM	6.39	M
DRAFT	4.0 - (3.5 - LIFT 2.6/4.2 OPTIONAL)	M
DISPLACEMENT	LIGHT - 46,000	Kg
BALLAST	12,300	Kg
SAIL AREA	325	M ²
MAINSAIL	182	M ²
JIB 90%	135	M ²
P	29.80	M
E	10.50	M
I	31.00	M
J	9.25	M
ENGINE	180	HP
WATER TANK	1,500	L
FUEL TANK	2,000	L
CE CERTIFICATION	RINA CATEGORY A	
DESIGNER	JAVIER SOTO ACEBAL	
INTERIOR DESIGNER	SOLARIS DESIGN TEAM / L. MICHELETTI	
STRUCTURAL	SOLARIS DESIGN TEAM	



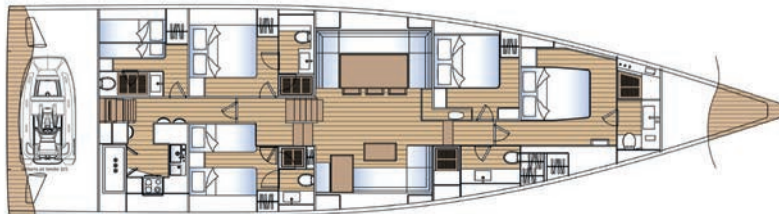
DECK LAYOUT



INTERIOR PLAN



ALTERNATIVE INTERIOR PLAN



- Semi custom - flexible layouts
- Full beam owner's aft as an option
- Very good internal spaces
- Tender longitudinal or transversal



BOAT

WORLD
SUPERYACHT
AWARDS
2021 JUDGES'
COMMENDATION

BOAT

DESIGN &
INNOVATION
AWARDS
2021 FINALIST



Solaris **111**

The Solaris flagship with breathtaking performance & award winning design



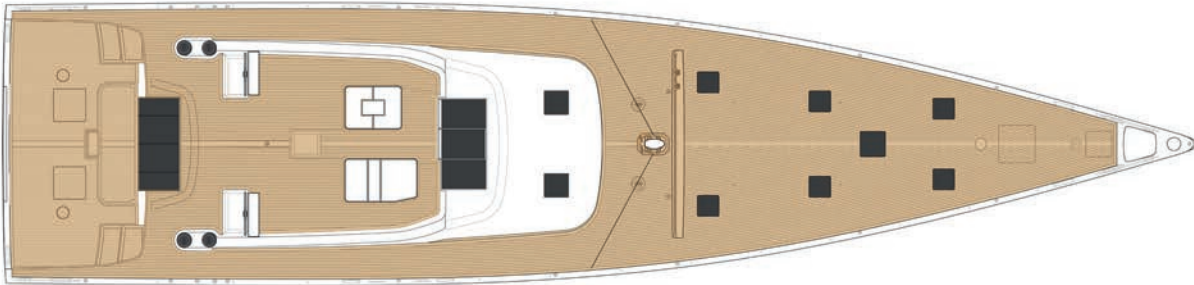
SOLARIS 111

LOA	33.77	M
LWL	32.16	M
BEAM	7.90	M
DRAFT	3.90 - 6.05	M
DISPLACEMENT	78,000	KG
CONSTRUCTION	CARBON PRE-PREG	
SAIL AREA	645	M ²
MAST (CARBON)	43.60	M
GENERATOR	1X32	KW
THRUSTERS	1X28	KW
ENGINE	425	HP
WATER TANK	1,700	L
FUEL TANK	4,400	L
DESIGNER	JAVIER SOTO ACEBAL	
EXTERIOR DESIGNER	MYT	
INTERIOR DESIGNER	MYT	

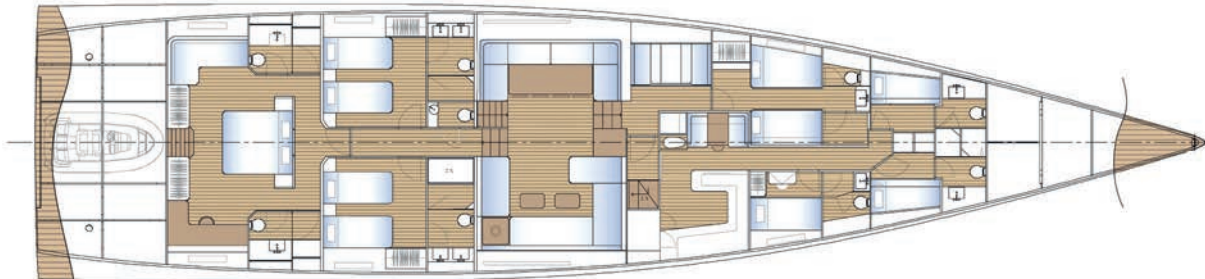


- Fully custom
- High performance world cruiser
- Winner of the most prestigious awards

DECK PLAN



INTERIOR PLAN



The Solaris Cup



Solaris Days The *Solaris Cup* is a yearly event celebrating the Solaris Yachts owners and the shipyard at the Porto Rotondo Yacht Club in Sardinia. The regatta attracts a large fleet of yachts that represents the entire history of the Solaris "family". Every June a large number of Solaris yachts migrate to the beautiful Costa Smeralda to face each other during several days alternating the challenges at sea with exclusive social moments on the ground.

During The two days leading up to the regatta action of the Solaris Cup, all Solaris models are on display giving a unique opportunity to test and experience the market leading performance and solidity of the Solaris Yachts. Over the years this event has become a highlight of the sailing season for those who own a Solaris and those who dream of joining the family.

More information are available upon request at events@solarisyachts.com





solaris cup



uilt for sailors





ITALY

HEADQUARTERS

- **Aquileia - ITALY**

+39 0431 91 304

info@solarisyachts.com

REST OF ITALY

- **Cala Galera & Punta Ala**

Giovanni Tarantino

+39 329 2508299

tarantino@solarisyachts.com

- **Lavagna**

Chiara Napolitani

+39 333 8314251

napolitani@solarisyachts.com

- **Varazze**

Demis Alcaras

+39 348 7630933

d.alcaras@solarisyachts.com

- **Ravenna**

Gian Maria Ruffilli

+39 345 5498523

gmr@solarisyachts.com

- **La Spezia - MC YACHT**

Paolo Oligeri

+39 335 5975428

p.oligeri@solarisyachts.com



All our dealers and partners have decades of experience and unparalleled knowledge of every single Solaris yacht.

We do everything to help our clients to find their perfect yacht and make sure the buying process is as exciting and rewarding as it is the entire yacht ownership experience.



global

Solaris in the world



network

AUSTRIA

- **Wien**
Eva Mayrhofer
+43 664 10 100 99
eva.mayrhofer@mayer-yachten.com

BENELUX

- **Ijmuiden**
Gideon Messink
+31 255 700 209
info@messink.nl

CROATIA / SLOVENIA

- **Ljubljana**
Ales Jeriha
+386 41 356 639
ales@solarisyachts.com

CZECH REPUBLIC

- **Prague**
Jan Johan Hirnsal
+42 0775074129
jhirnsal@maritimerace.eu

ESTONIA - LATVIA - LITUANIA

- **Tallin**
Mati Sepp
+372 5649 5589
info@solarisyachts.ee

FRANCE

- **Antibes**
Nicola Imbrioscia
+33 6 01010896
nicola@lb-yachting.com
- **La Trinité sul Mer**
Mathieu Jones
+33 6 37 47 93 09
m.jones@alternative-sailing.com
- **Port Grimaud**
Franck Doudet
+33 6 648264901
f.doudet@solarisyachts.com
- **Marseille**
Michel Vermeulen
+33 6 85117180
france@solarisyachts.com

GERMANY

- **Dusseldorf/ Heiligenhafen**
Ben Vaes
+49 172 9192533
bv@sycustom.com
- **Paolo Buonvicini**
+41 79 447 6425
pb@sycustom.com

GREECE

- **Athens**
Michalis Affias
+30 6977 2345 27
m.affias@fastsailing.gr

HUNGARY

- **Budapest**
Robert Lang
+36 30 932 7700
mail@robertlang.hu

MALTA

- **Malta**
Matthew Fiorini Lowell
+356 9942 3334
matthewfl@flyachting.com

NORWAY

- **Stavanger**
Per Jone Bakker
+47 466 35 425
perjone@nibayachting.no

POLAND

- **Warsaw**
Przemyslaw Tarnacki
+48 600 003 268
info@superyachts.pl

RUSSIA

- **Moscow**
Stan Shestopalov
+7 915 1337988
shestopalov@e-marine.ru

SPAIN

- **Barcelona**
Xavi Garriga
+34 670 06 39 16
xavi@solarisiberica.com
- **Palma de Mallorca**
Andreas Bodmer
+34 661200007
ahbodmer@gmail.com
- **Marbella**
Iñaki Castañer
+34 670 557 349
info@castaner-yachts.com

SWITZERLAND

- **Chur**
Jan-Hendrik Loens
+41 76 3409076
jan@sailingcorner.ch
- **Paolo Buonvicini**
+41 79 447 6425
pb@sycustom.com

SWEDEN

- **Henan**

Magnus Kullberg

+46 79 079 55 45

magnus.kullberg@berthonscandinavia.se

UK

- **Lymington**

Alan McIlroy

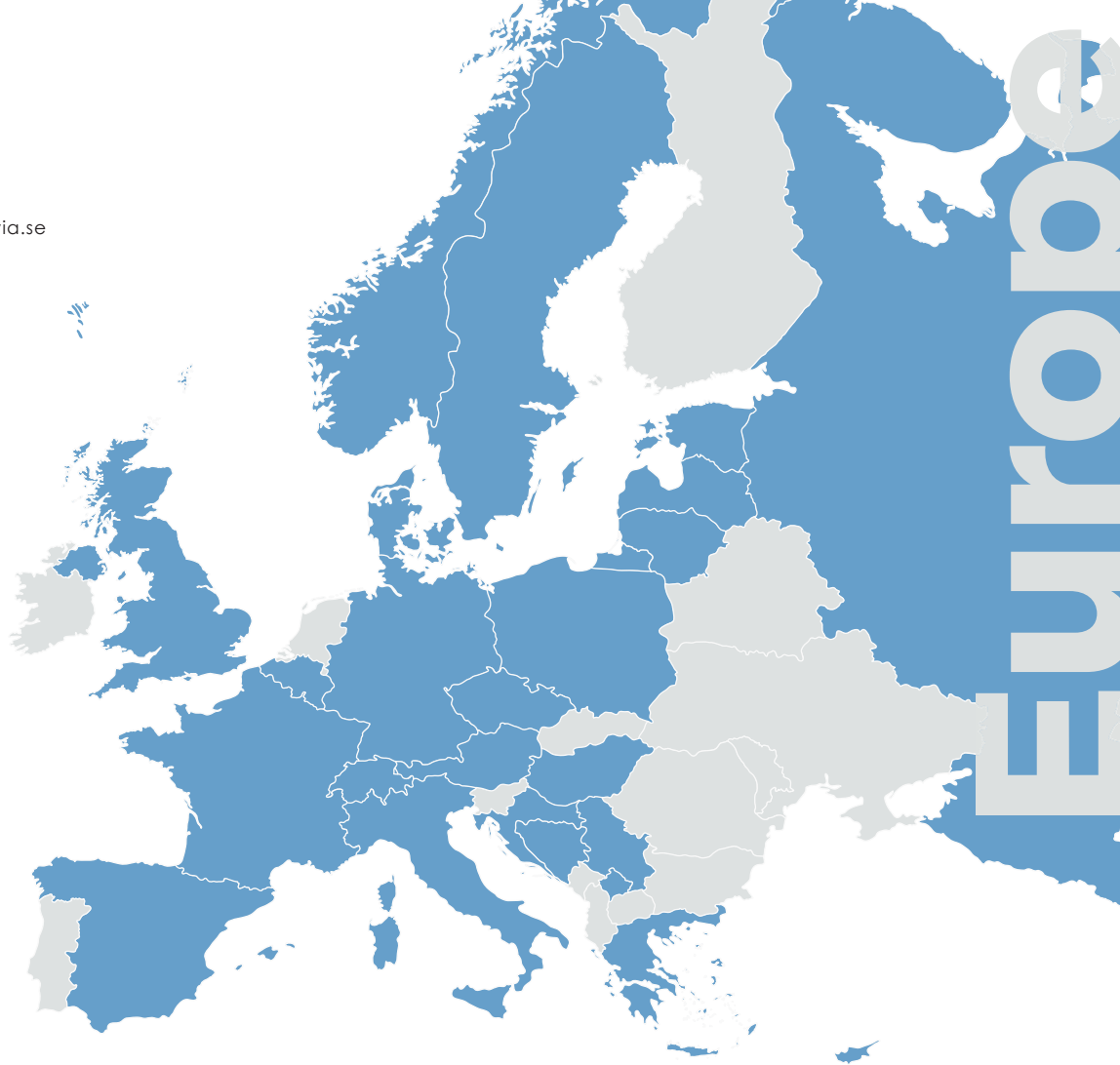
+44 7714 712837

alan.mcilroy@berthon.co.uk

Richard Baldwin

+44 7971 405236

richard@solarisyachts.com



NORTH AMERICA

WEST COAST

- **Hawaii & Los Angeles**

Chad M. Allenbaugh

+1 808 551 2635

cma@globaloceanclub.com

EAST COAST

- **Newport**

Mark von Drashek

+1 206 9797345

mark.von@berthonusa.com

ASIA PACIFIC

HONG KONG - CHINA

- **Hong Kong**

Enrico Zanella

+852 52088518

egz@solarisyachts.com

SOUTH AMERICA

BRASIL

- **Rio de Janeiro**

Jorge Bally

+ 55 21 9 8602 4703

info@ballypremiumyachts.com.br

CHILE - PERU

- **Santiago de Chile**

Rodrigo Zuazola

+56 9 98706260

rzuzola@oceanic.cl

AUSTRALIA

AUSTRALIA - NEW ZEALAND

- **Sidney**

Anthony Bishop

+61 431 614 223

anthony@windcraftyachts.com

MIDDLE EAST

TURKEY

- **Istanbul**

Ali Mutevelli

+90 5323145622

ali@solarisyachts.com

ISRAEL

- **Herzliya**

Golan Levi

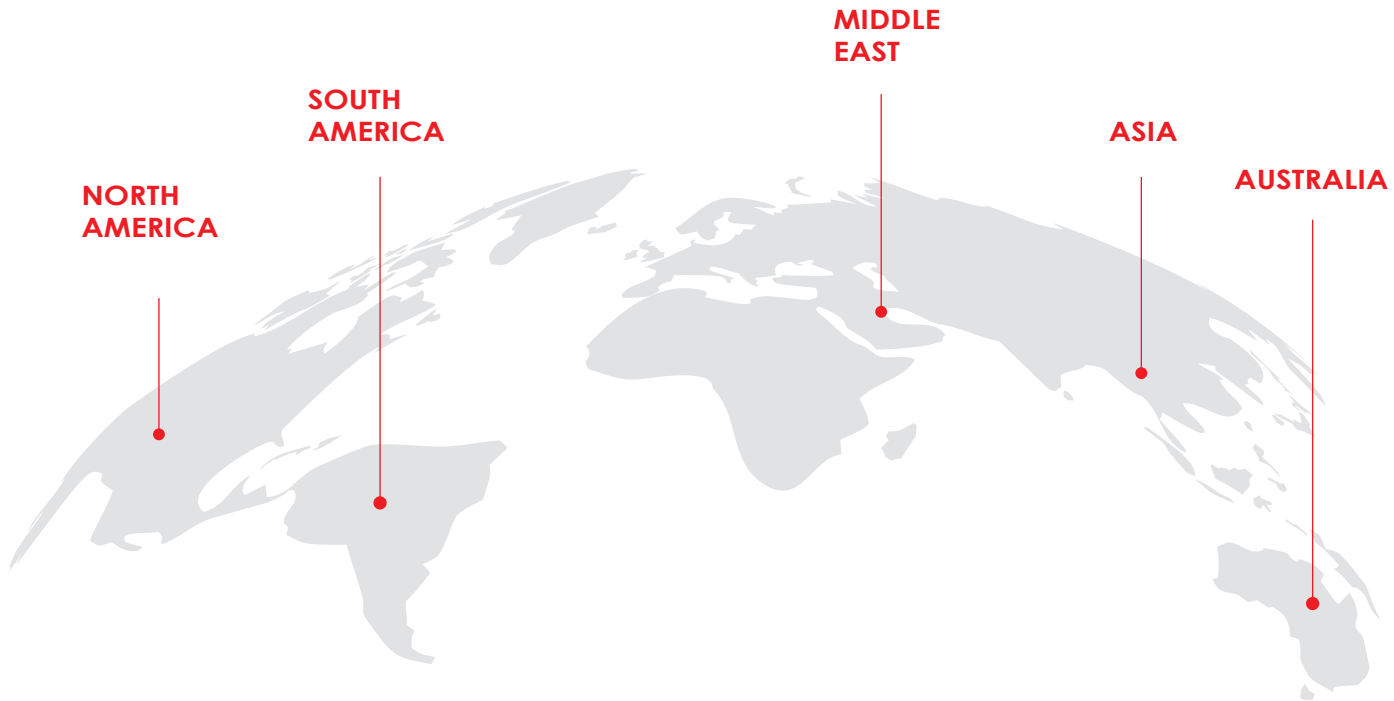
+97 2543000933

golan@swellyachting.com

With an extensive network of distributors around the globe, we are able to give our customers a world-class service almost everywhere.

For more information or any general enquiries, please contact your local Solaris office.

rest of



the world



SOLARIS YACHTS

BUILT FOR SAILORS

Photo credits:

G. Plisson, J. Renedo, C. Baroncini, N. Oleotto, A. Carloni, U. De Luca, M. Defina, Yacht/T. Störkle, Tassotto&Max.

Printed in Italy

Solaris Yachts reserves the right to change descriptions, modify or substitute products in this catalogue without notice.
Solaris is a registered trademark of Solaris Yachts Srl, other names may be registered trademarks of their respective owners.

© SOLARIS 2022. ALL RIGHTS RESERVED.



info@solarisyachts.com



solarisyachts.com